

PARCO
DEI MULINI



 REAL
ESTATE
HOME SUD HOME

PROJECT FEATURES

DISCOVER THE MOST FASCINATING OFFERING OF OLD MILLS TO BE RESTORED AS LUXURIOUS COUNTRY PROPERTIES,

AN AVANT-GARDE LUXURY PROJECT LOCATED IN ONE OF THE MOST STRIKING LANDSCAPE SETTINGS IN SICILY.

A PROJECT PERFECTLY INTEGRATED WITH THE SURROUNDING UNSPOILED NATURE OFFERING AN UNPARALLELED LIVING EXPERIENCE

IN AN OASIS OF ELEGANCE AND SERENITY JUST A STONE'S THROW FROM RAGUSA IBLA.

PARCO DEI MULINI

THE LAND

- ESTATE 4, 5, 6, 7, 8, 9, 10, 11, 12 ARE FOR SALE
- TOTAL LAND IS 97,813 SQMT

LEGEND

-  PROPERTY AREA
"PARCO DEI MULINI" ESTATE
-  RIVER INSIDE THE PROPERTY
-  BRIDGE ON THE RIVER
-  MAIN ROAD AND PATH INSIDE THE PROPERTY
-  ANTIQUE RAYLWAYS (1880)

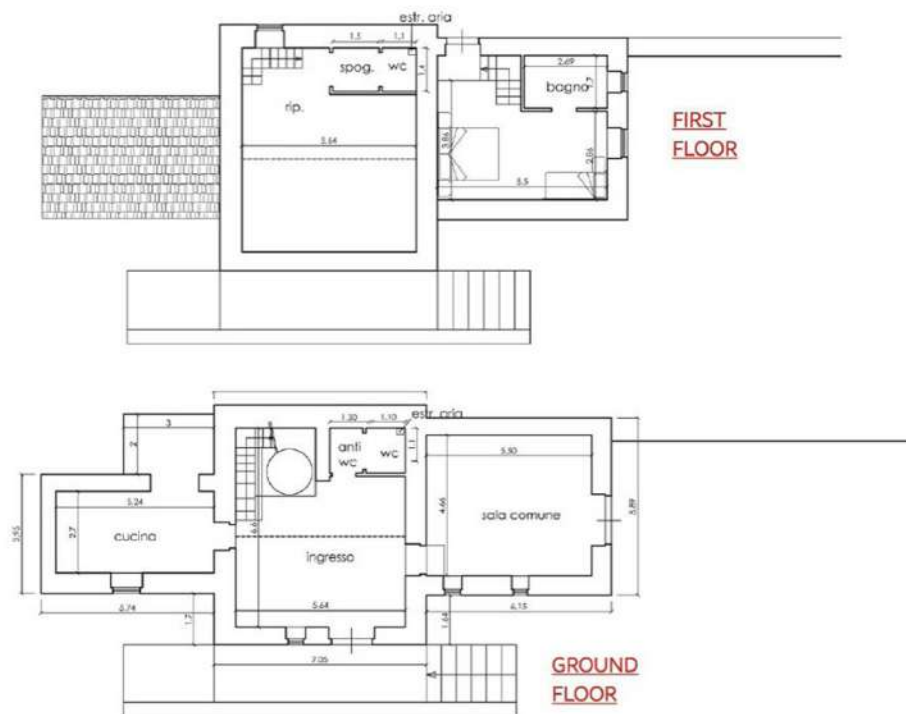
- 4** "MISERICODIA" MAIN WATER MILLS
- 5** HOTEL & RESTAURANT & ECORESORT RECEPTION
- 6** "MACROSTIGMA" FARM HOUSE
- 7** "HYPOGEUS" FARM HOUSE
- 8** "PIRATELLO" FARM HOUSE
- 9** "PLATANUS ORIENTALIS" FARM HOUSE
- 10** "CHIARAMIDI" POND WATER MILL
- 11** "CHIARAMIDI" RIVER WATER MILL
- 12** FARM HOUSE



FARM HOUSE 4

“MISERICORDIA”

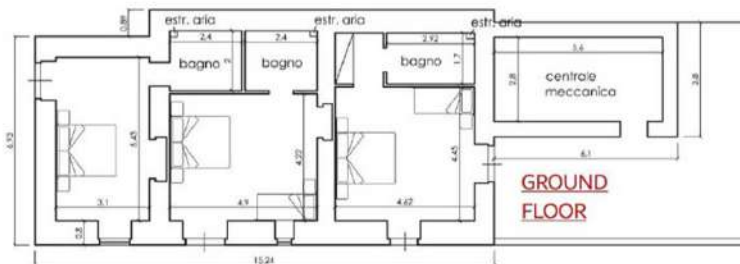
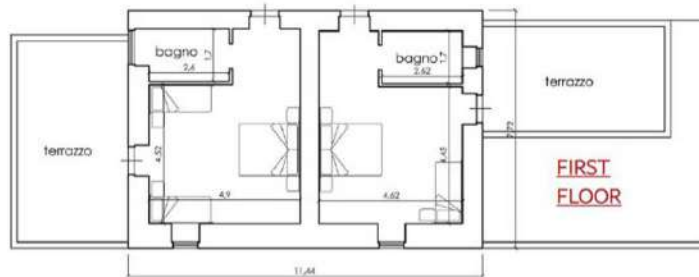
- IT WILL BE THE WELCOME AREA, RESTAURANT AND BACK OF THE HOUSE
- TOTAL SIZE OF 205 SQMT ON 2 FLOORS



FARM HOUSE 5

“SOPRANO MISERICORDIA”

- IT WILL HOST 5 GUESTROOMS
- TOTAL SIZE OF 231 SQMT ON 2 FLOORS



FARM HOUSE 6

“MACROSTIGMA”

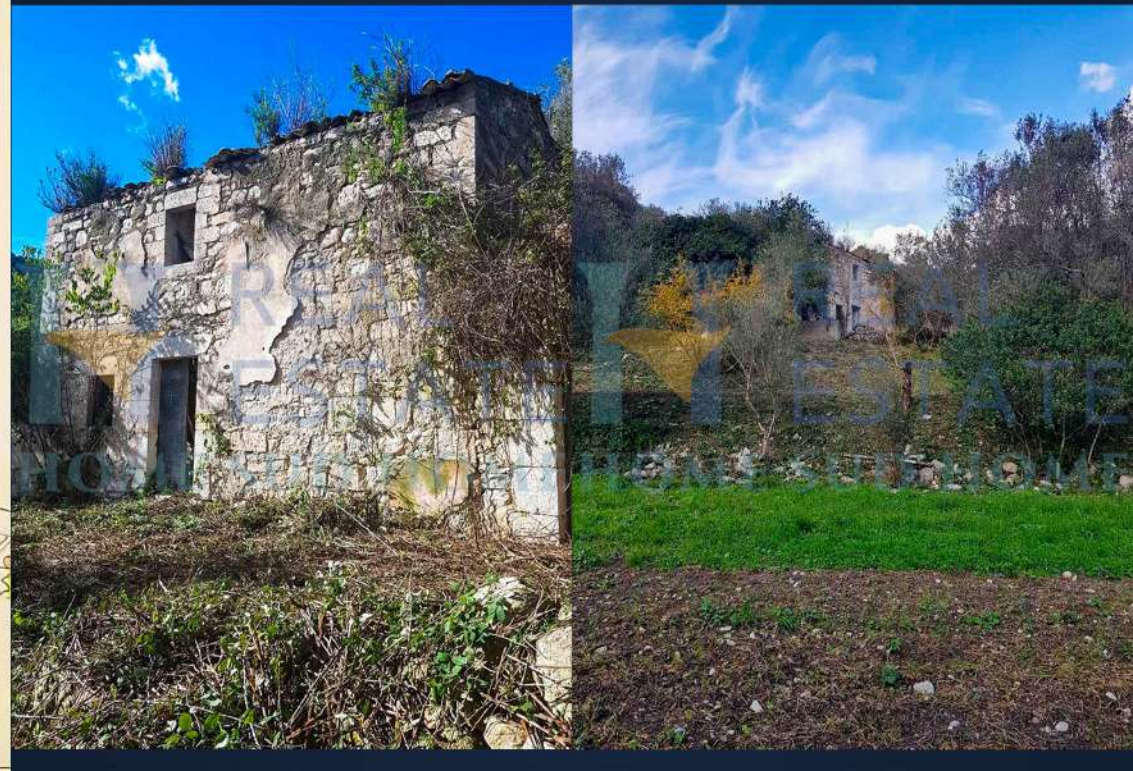
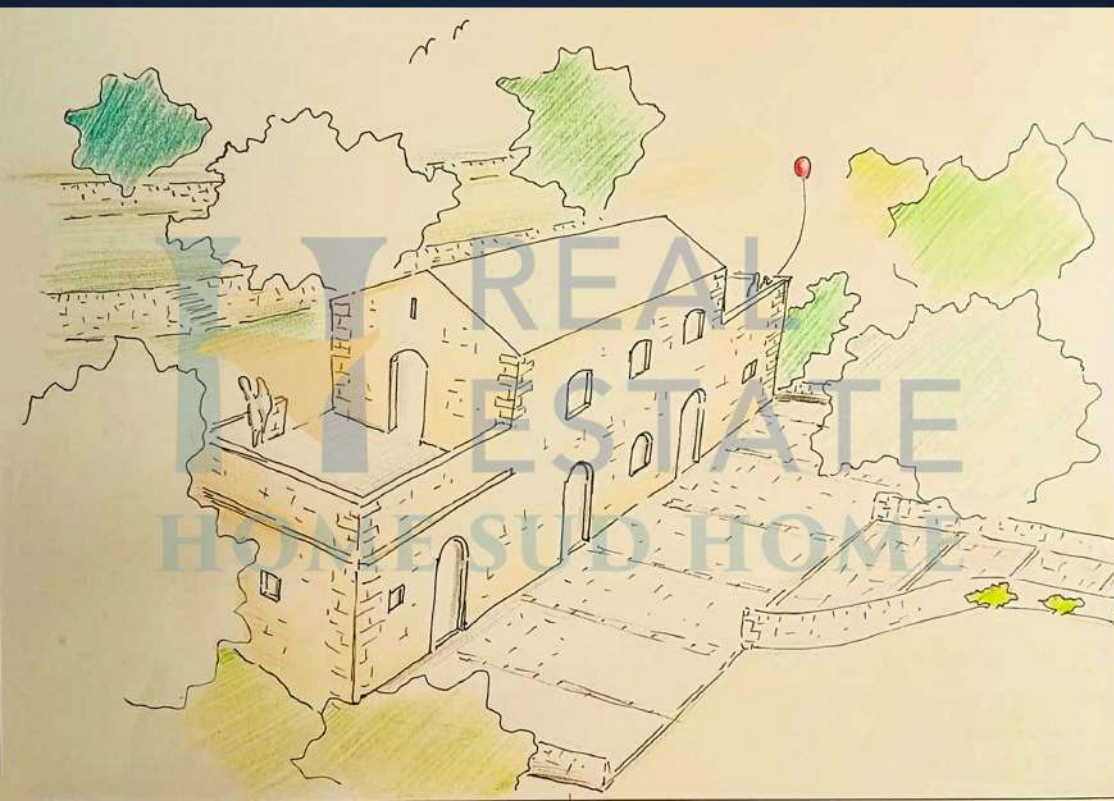
- TOTAL MAIN BUILDING SIZE OF 240 SQMT ON 2 FLOORS
- TOTAL SIZE OF SECONDARY BUILDINGS 64 SQMT AND 68 SQMT



FARM HOUSE 8

“PIRATELLO”

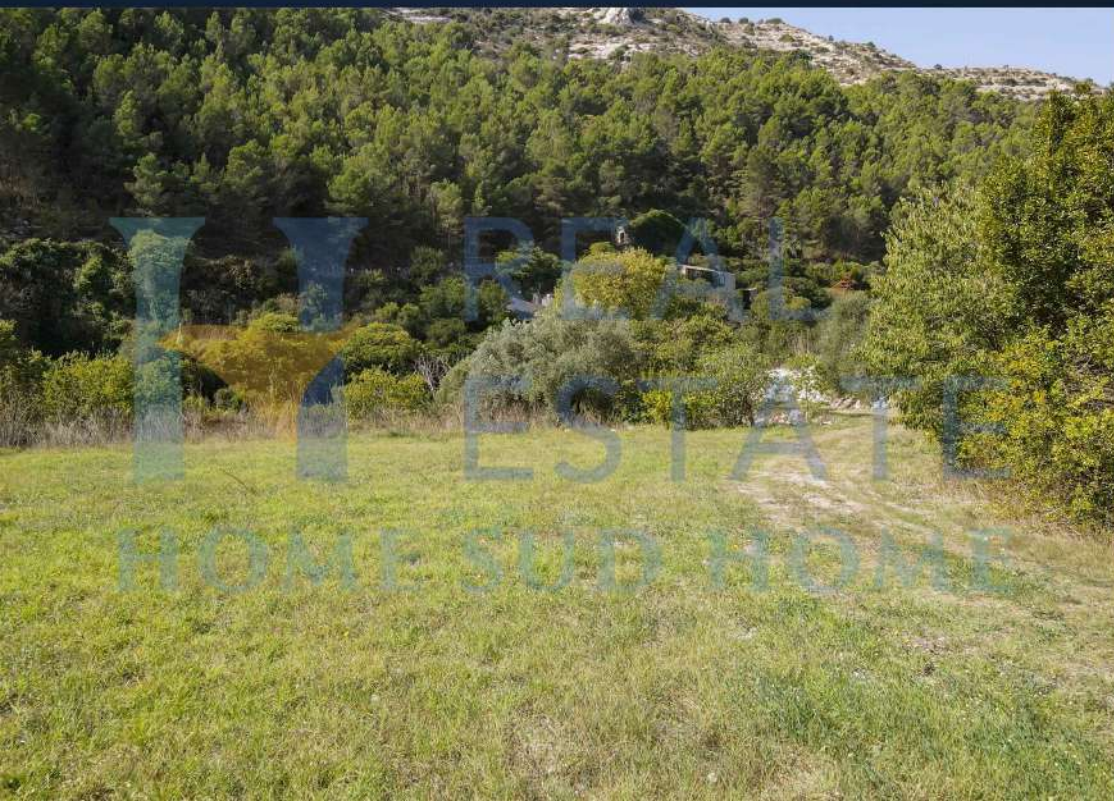
- TOTAL MAIN BUILDING SIZE OF 140 SQMT ON 2 FLOORS
- SURROUNDED BY TERRACES WITH BEAUTIFUL ANCIENT OLIVE TREES AND CAROB TREES



FARM HOUSE 9

“PLATANUS ORIENTALIS”

- TOTAL MAIN BUILDING SIZE OF 60 SQMT ON 2 FLOORS
- IT WILL HOST 2 GUESTROOMS



FARM HOUSE 10+11

“CHIARAMIDI WATER MILL”

- TOTAL MAIN BUILDING SIZE OF 200 SQMT
- IT WILL HOST 5 GUESTROOMS



AN EXCELLENT INVESTMENT OPPORTUNITY

“THE ENTIRE ESTATE IS NESTLED IN THE REGIONAL FOREST PARK,
AN EXTRAORDINARY AREA WHOSE LANDSCAPE REMAINS
UNCHANGED AND UNTOUCHED BY TIME.”

“THIS IS A UNIQUE PROPERTY WHOSE VALUE WILL CONTINUE
TO GROW OVER TIME.

CONSIDERING THE GROWING IMPORTANCE OF THE SOUTHEASTERN
LANDSCAPE IN THE INTERNATIONAL REAL ESTATE MARKET,
'RAGUSA COUNTY' IS EMERGING AS A TOP TOURIST DESTINATION.”

“THIS ECO RESORT REPRESENTS THE IDEAL INVESTMENT
FOR THOSE WHO WISH TO REALIZE A SOLID PROJECT
THAT MERGES SICILIAN TRADITION WITH THE BEAUTY OF NATURE.”



PARCO
DEI MULINI



H REAL
ESTATE
HOME SUD HOME